

CREATIVE CONCEPTS OF NJ
580 NORTH COUNTYLINE ROAD
BLDG 1, UNIT 3 08527
JACKSON, NEW JERSEY 732-833-1776

MATERIALS

INTERIOR - White Melamine
EDGE BANDING - White PVC
EXTERIOR 1 - Wilsonart Designer White D354
COUNTERTOPS - Wilsonart Black 1595

HARDWARE

Hinges - Blum 71B3550 Or Equivilent
Handle - 96mm CTC Hafele Chrome Wire Pull
Other - Hafele Axilo 100mm adjustable Leg

NOTES

THE INFORMATION CONTAINED IN THIS DRAWING IS THE
SOLE PROPERTY OF CREATIVE CONCEPTS OF NJ LLC.
ANY REPRODUCTION IN PART OR AS A WHOLE WITHOUT THE
WRITTEN PERMISSION OF CREATIVE CONCEPTS OF NJ IS PROHIBITED.

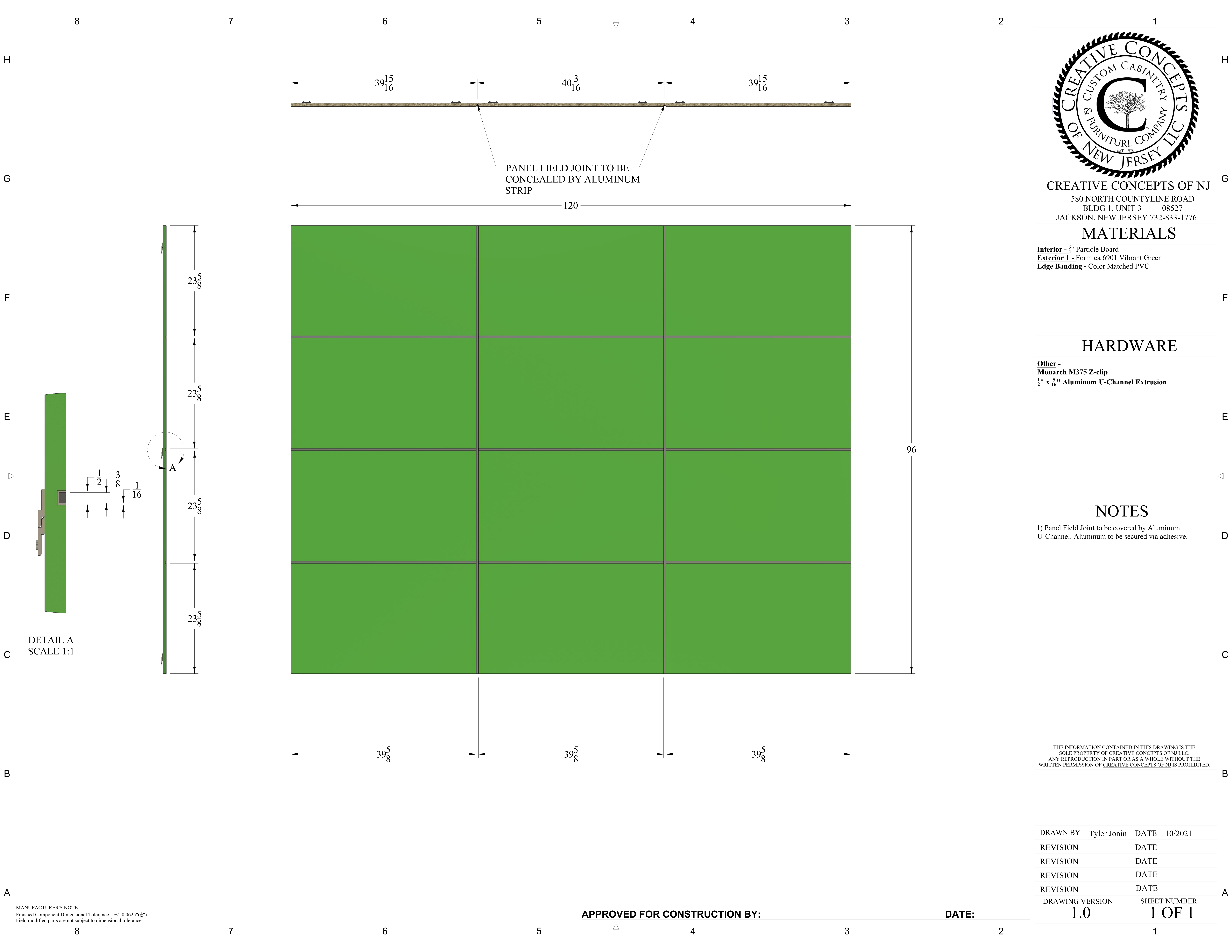
DRAWN BY	Tyler Jonin	DATE	10/2021
REVISION		DATE	
REVISION		DATE	
REVISION		DATE	
REVISION		DATE	

DRAWING VERSION	SHEET NUMBER
1.0	1 OF 1

MANUFACTURER'S NOTE -
Finished Component Dimensional Tolerance = +/- 0.0625" (1/16")
Field modified parts are not subject to dimensional tolerance.

APPROVED FOR CONSTRUCTION BY:

DATE:



CREATIVE CONCEPTS OF NJ
580 NORTH COUNTYLINE ROAD
BLDG 1, UNIT 3 08527
JACKSON, NEW JERSEY 732-833-1776

MATERIALS

Interior - ¾" Particle Board
Exterior 1 - Formica 6901 Vibrant Green
Edge Banding - Color Matched PVC

HARDWARE

Other -
Monarch M375 Z-clip
½" x 5/16" Aluminum U-Channel Extrusion

NOTES

1) Panel Field Joint to be covered by Aluminum U-Channel. Aluminum to be secured via adhesive.

THE INFORMATION CONTAINED IN THIS DRAWING IS THE
SOLE PROPERTY OF CREATIVE CONCEPTS OF NJ LLC.
ANY REPRODUCTION IN PART OR AS A WHOLE WITHOUT THE
WRITTEN PERMISSION OF CREATIVE CONCEPTS OF NJ IS PROHIBITED.

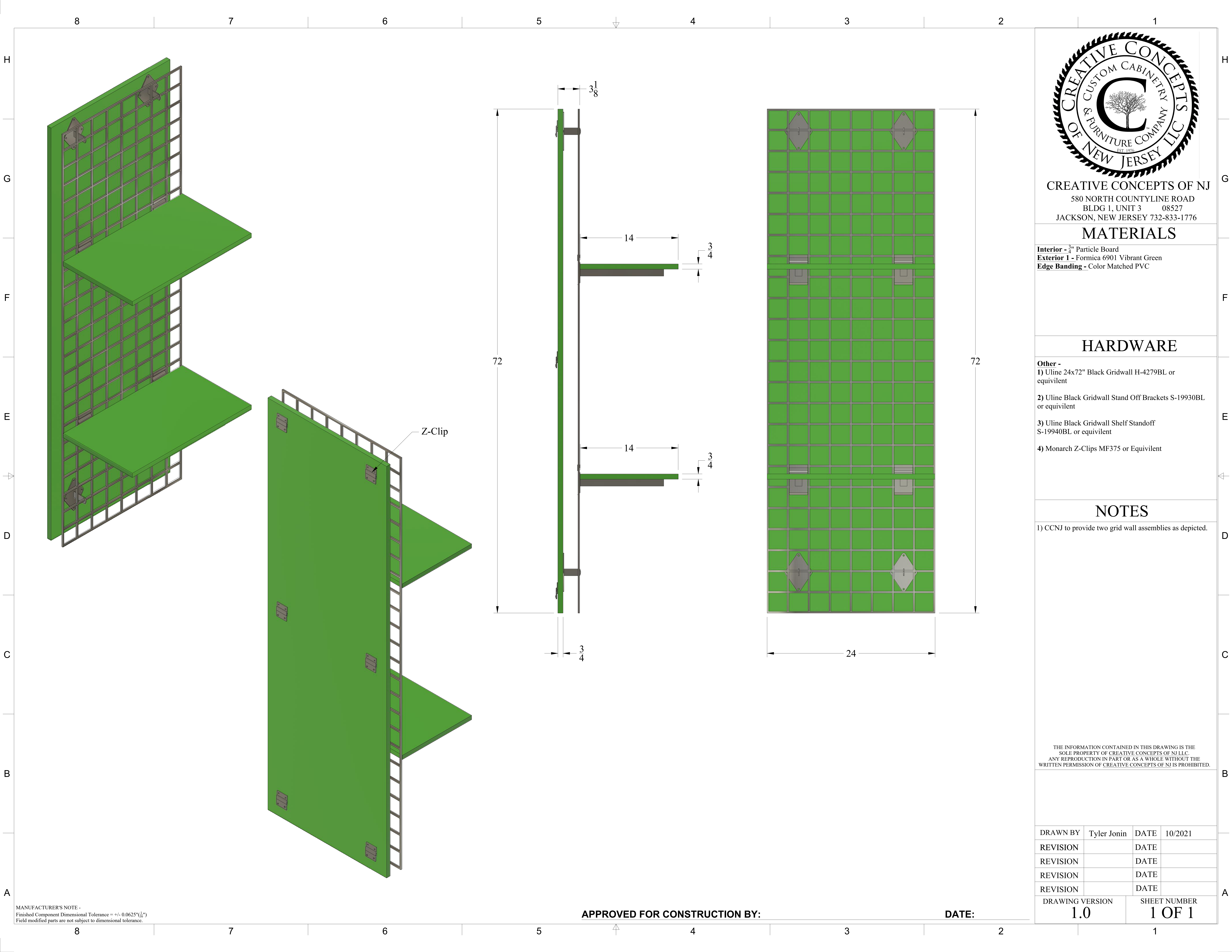
DRAWN BY	Tyler Jonin	DATE	10/2021
REVISION		DATE	
REVISION		DATE	
REVISION		DATE	
REVISION		DATE	

DRAWING VERSION	SHEET NUMBER
1.0	1 OF 1

MANUFACTURER'S NOTE -
Finished Component Dimensional Tolerance = +/- 0.0625" (1/16")
Field modified parts are not subject to dimensional tolerance.

APPROVED FOR CONSTRUCTION BY:

DATE:



CREATIVE CONCEPTS OF NJ
580 NORTH COUNTYLINE ROAD
BLDG 1, UNIT 3 08527
JACKSON, NEW JERSEY 732-833-1776

MATERIALS

Interior - 3/4" Particle Board
Exterior 1 - Formica 6901 Vibrant Green
Edge Banding - Color Matched PVC

HARDWARE

- Other -
1) Uline 24x72" Black Gridwall H-4279BL or equivalent
2) Uline Black Gridwall Stand Off Brackets S-19930BL or equivalent
3) Uline Black Gridwall Shelf Standoff S-19940BL or equivalent
4) Monarch Z-Clips MF375 or Equivalent

NOTES

1) CCNJ to provide two grid wall assemblies as depicted.

THE INFORMATION CONTAINED IN THIS DRAWING IS THE
SOLE PROPERTY OF CREATIVE CONCEPTS OF NJ LLC.
ANY REPRODUCTION IN PART OR AS A WHOLE WITHOUT THE
WRITTEN PERMISSION OF CREATIVE CONCEPTS OF NJ IS PROHIBITED.

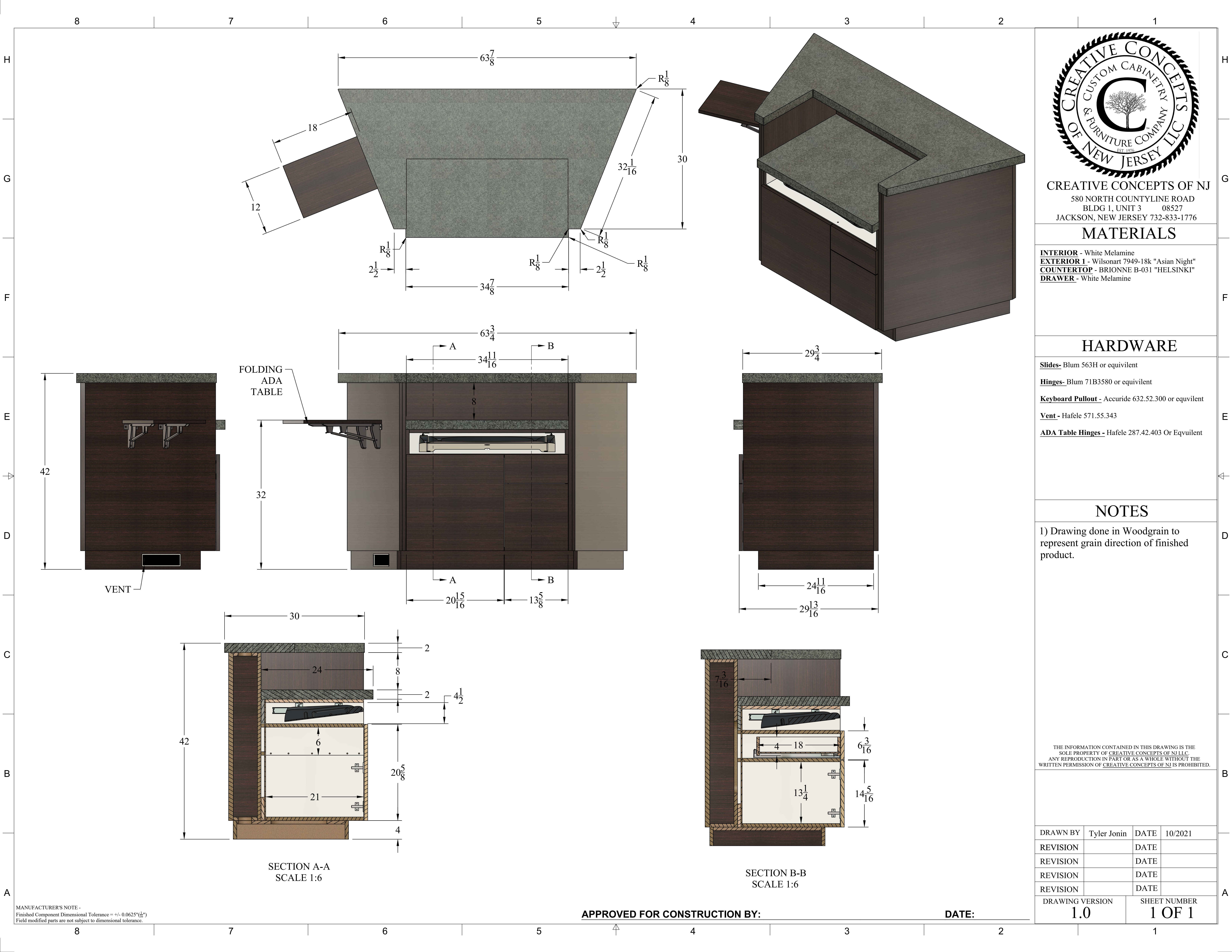
DRAWN BY	Tyler Jonin	DATE	10/2021
REVISION		DATE	
REVISION		DATE	
REVISION		DATE	
REVISION		DATE	

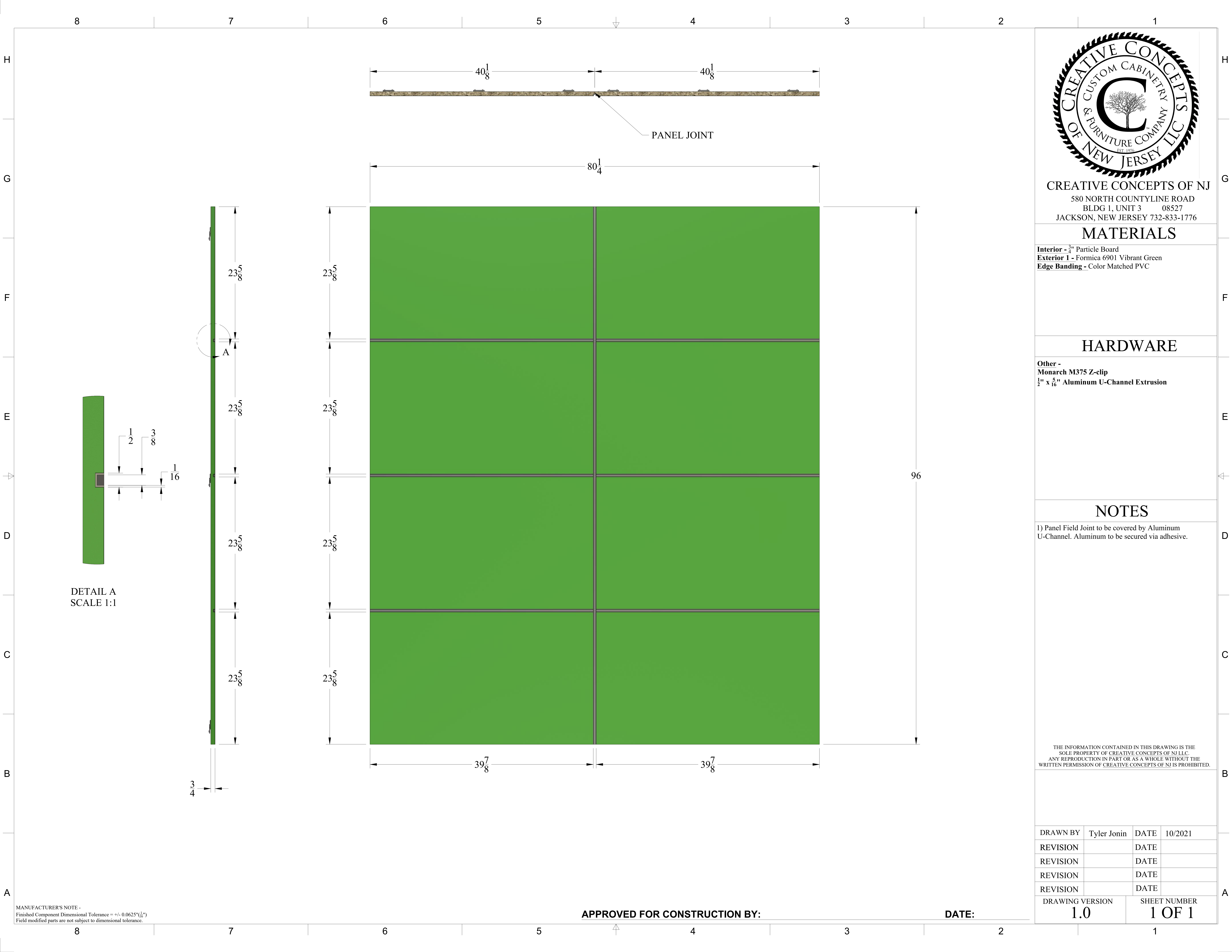
DRAWING VERSION	SHEET NUMBER
1.0	1 OF 1

MANUFACTURER'S NOTE -
Finished Component Dimensional Tolerance = +/- 0.0625" (1/16")
Field modified parts are not subject to dimensional tolerance.

APPROVED FOR CONSTRUCTION BY:

DATE:





CREATIVE CONCEPTS OF NJ
580 NORTH COUNTYLINE ROAD
BLDG 1, UNIT 3 08527
JACKSON, NEW JERSEY 732-833-1776

MATERIALS

Interior - $\frac{3}{4}$ " Particle Board
Exterior 1 - Formica 6901 Vibrant Green
Edge Banding - Color Matched PVC

HARDWARE

Other -
Monarch M375 Z-clip
 $\frac{1}{2}$ " x $\frac{5}{16}$ " Aluminum U-Channel Extrusion

NOTES

1) Panel Field Joint to be covered by Aluminum U-Channel. Aluminum to be secured via adhesive.

THE INFORMATION CONTAINED IN THIS DRAWING IS THE
SOLE PROPERTY OF CREATIVE CONCEPTS OF NJ LLC.
ANY REPRODUCTION IN PART OR AS A WHOLE WITHOUT THE
WRITTEN PERMISSION OF CREATIVE CONCEPTS OF NJ IS PROHIBITED.

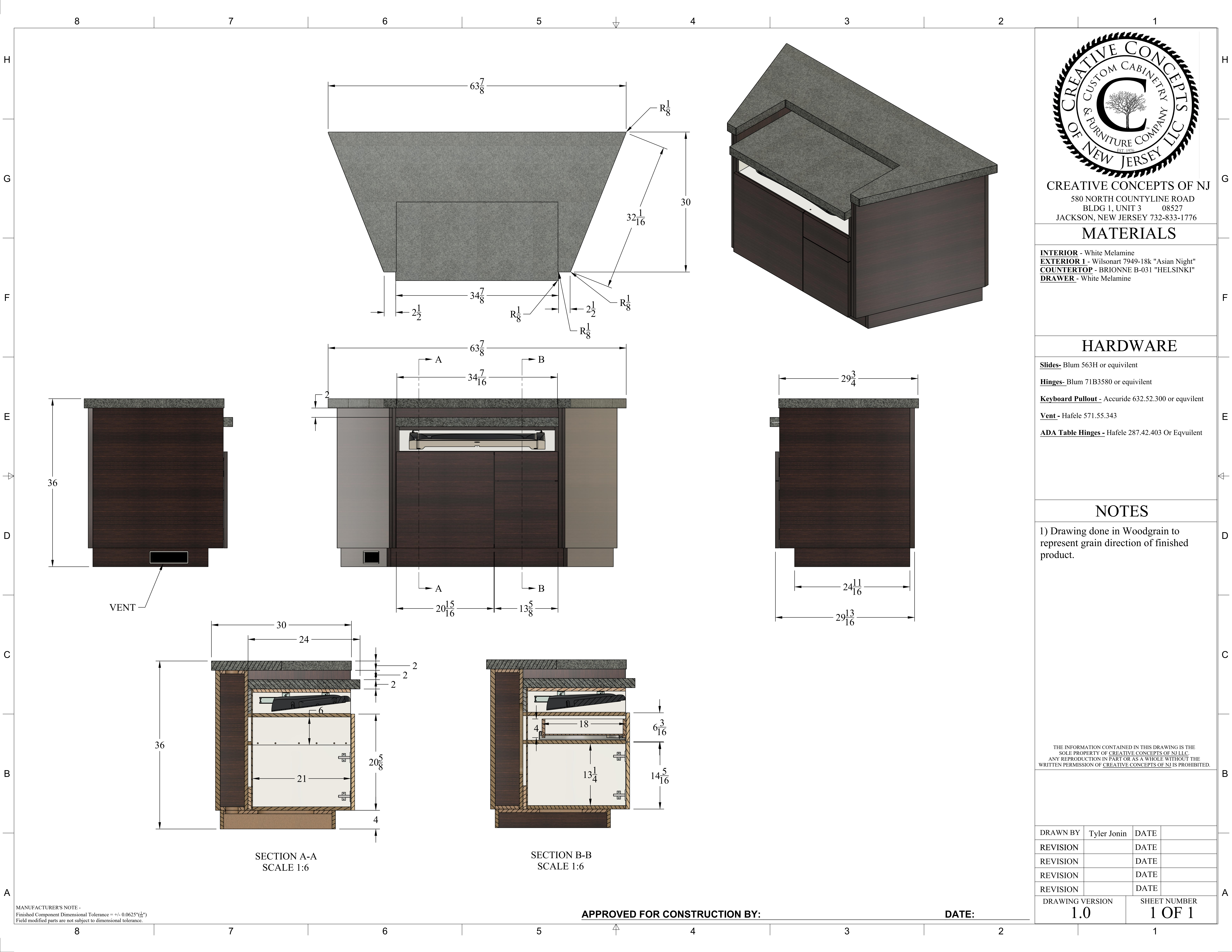
DRAWN BY	Tyler Jonin	DATE	10/2021
REVISION		DATE	
REVISION		DATE	
REVISION		DATE	
REVISION		DATE	

DRAWING VERSION	SHEET NUMBER
1.0	1 OF 1

MANUFACTURER'S NOTE -
Finished Component Dimensional Tolerance = +/- 0.0625" ($\frac{1}{16}$ ")
Field modified parts are not subject to dimensional tolerance.

APPROVED FOR CONSTRUCTION BY:

DATE:



CREATIVE CONCEPTS OF NJ
580 NORTH COUNTYLINE ROAD
BLDG 1, UNIT 3 08527
JACKSON, NEW JERSEY 732-833-1776

MATERIALS

INTERIOR - White Melamine
EXTERIOR 1 - Wilsonart 7949-18k "Asian Night"
COUNTERTOP - BRIONNE B-031 "HELSINKI"
DRAWER - White Melamine

HARDWARE

Slides- Blum 563H or equivalent
Hinges- Blum 71B3580 or equivalent
Keyboard Pullout - Accuride 632.52.300 or equivalent
Vent - Hafele 571.55.343
ADA Table Hinges - Hafele 287.42.403 Or Equvilent

NOTES

1) Drawing done in Woodgrain to represent grain direction of finished product.

THE INFORMATION CONTAINED IN THIS DRAWING IS THE
SOLE PROPERTY OF CREATIVE CONCEPTS OF NJ LLC.
ANY REPRODUCTION IN PART OR AS A WHOLE WITHOUT THE
WRITTEN PERMISSION OF CREATIVE CONCEPTS OF NJ IS PROHIBITED.

DRAWN BY	Tyler Jonin	DATE	
REVISION		DATE	
REVISION		DATE	
REVISION		DATE	
REVISION		DATE	

DRAWING VERSION	SHEET NUMBER
1.0	1 OF 1

MANUFACTURER'S NOTE -
Finished Component Dimensional Tolerance = +/- 0.0625" (1/16")
Field modified parts are not subject to dimensional tolerance.

APPROVED FOR CONSTRUCTION BY:

DATE: