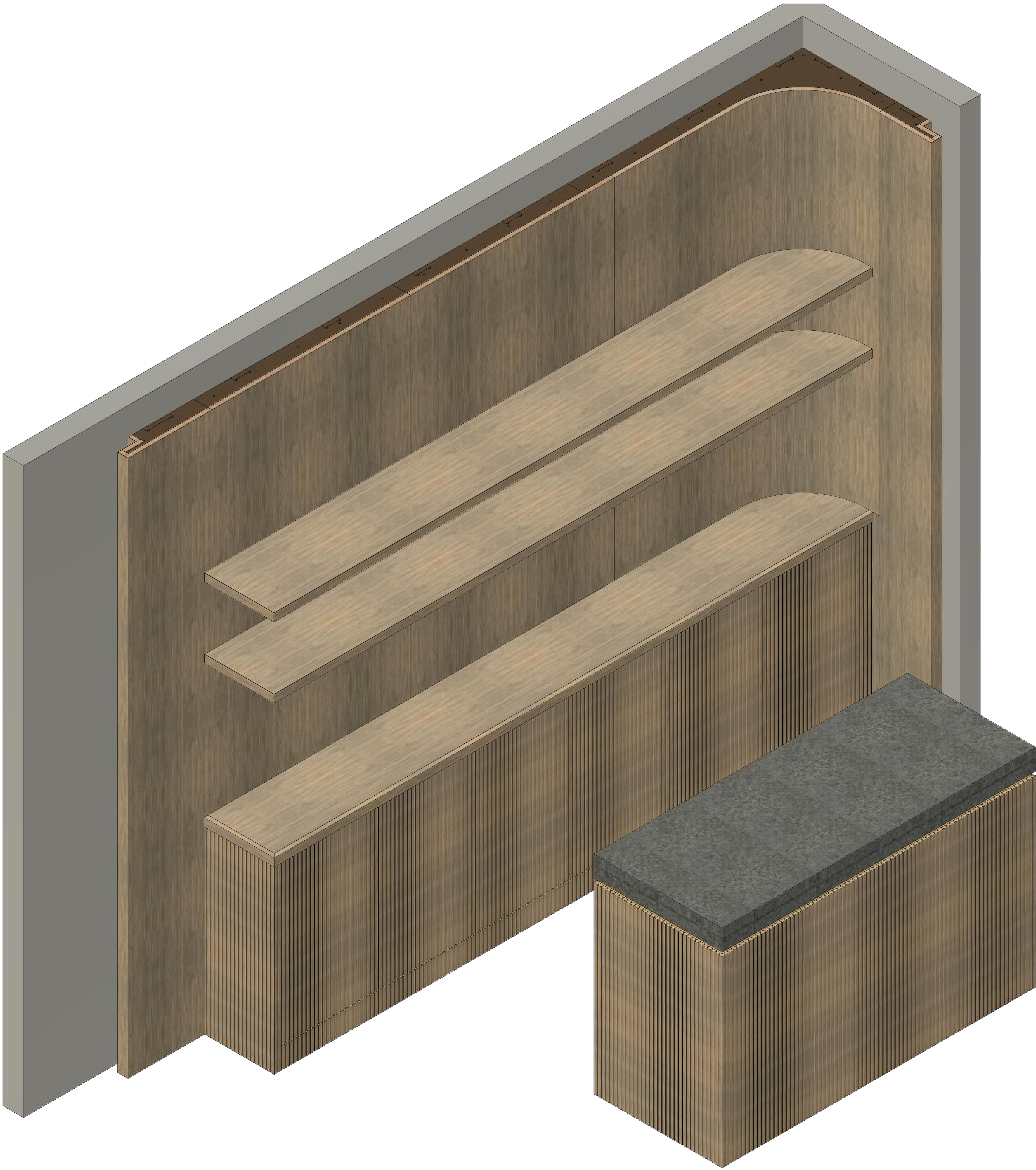


Living Room Bar Isometric Projection



CREATIVE CONCEPTS OF NJ  
580 NORTH COUNTYLINE ROAD  
BLDG 1, UNIT 3 08527  
JACKSON, NEW JERSEY 732-833-1776

MATERIALS

**Construction Materials** -  $\frac{3}{4}$ " White Oak Veneer over MDF,  $\frac{3}{4}$ " MRMDF,  $\frac{3}{4}$ " Plain Plywood,  $\frac{3}{4}$ " Prefinished Plywood, Bending substrate, Paperback White Oak Veneer,  $\frac{3}{4}$ " solid white oak slats  
TBD at time of construction on the bench,  $\frac{3}{4}$ " White Oak solid wood where applicable.  
**Exterior 1** - Finish TBD  
**Edge Banding** - 1mm White Oak Wood Veneer where applicable.

HARDWARE

**Slides** - Salice Futura 5999 Or Equivalent  
**Hinges** - Blum 71B3550 Or Equivalent  
**Adj. Legs** - 100m Hafele Axilo  
**Floating Shelf Bracket** - Triade Concealed Mounting Bracket

NOTES

- 1) All Stone Countertop surfaces are for reference only, are NIC and not to be used for construction.
- 2) All visual depictions of grain direction are indicative of real life grain direction. No grains are to be matched.
- 3) Additional blocking not depicted on drawing may be provided based on construction requirements on the bench.

THE INFORMATION CONTAINED IN THIS DRAWING IS THE  
SOLE PROPERTY OF CREATIVE CONCEPTS OF NJ LLC.  
ANY REPRODUCTION IN PART OR AS A WHOLE WITHOUT THE  
WRITTEN PERMISSION OF CREATIVE CONCEPTS OF NJ IS PROHIBITED.

DRAWN BY	Tyler Jonin	DATE	12/29/2022
REVISION	V2.0	DATE	02/07/2023
REVISION		DATE	
REVISION		DATE	
REVISION		DATE	

DRAWING VERSION	SHEET NUMBER
2.0	1 OF 6

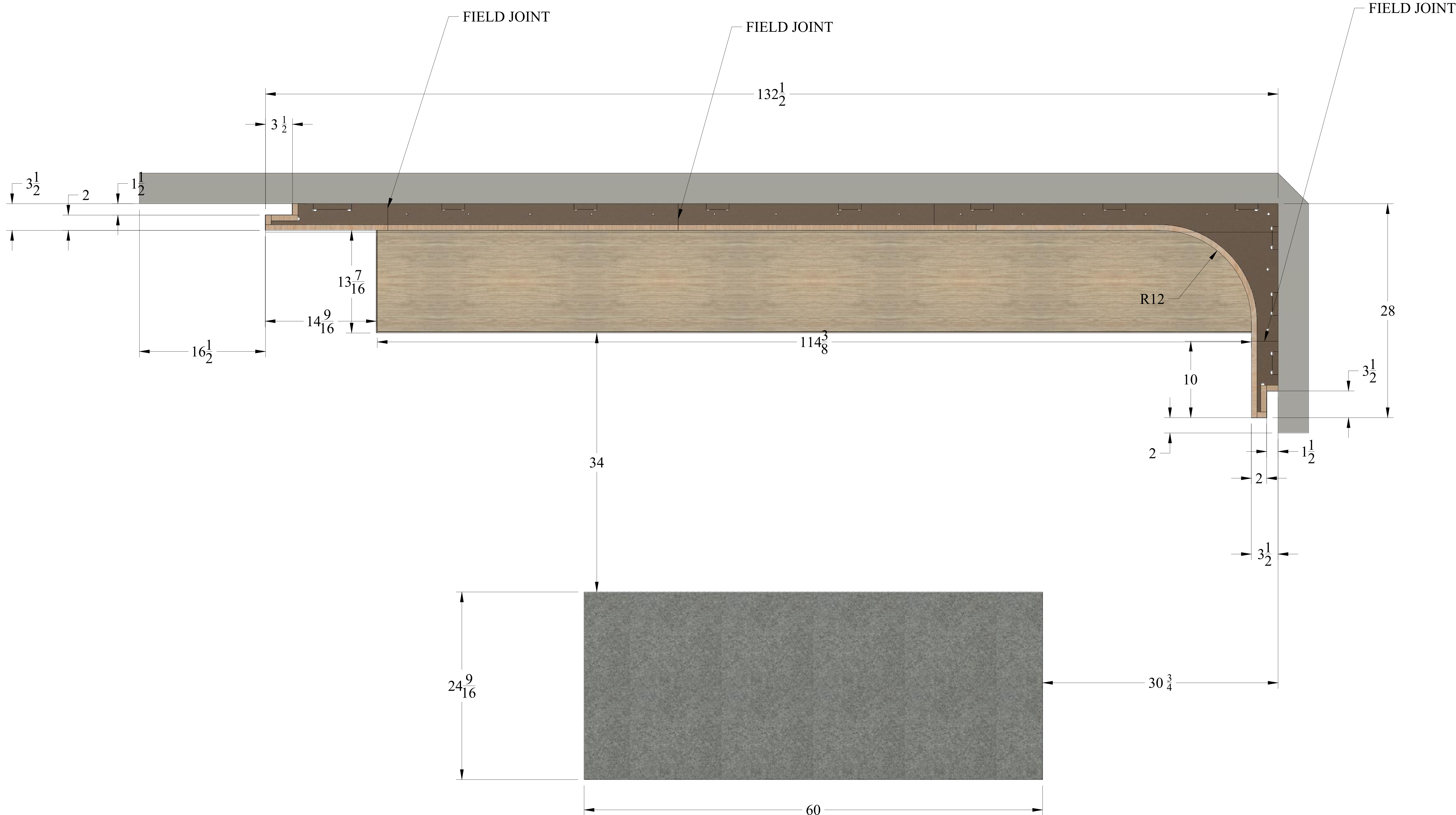
MANUFACTURER'S NOTE -  
Finished Component Dimensional Tolerance = +/- 0.0625"( $\frac{1}{16}$ ")  
Field modified parts are not subject to dimensional tolerance.

APPROVED FOR CONSTRUCTION BY:

DATE:



Living Room Bar Plan View



CREATIVE CONCEPTS OF NJ  
580 NORTH COUNTYLINE ROAD  
BLDG 1, UNIT 3 08527  
JACKSON, NEW JERSEY 732-833-1776

MATERIALS

**Construction Materials** - 3/4" White Oak Veneer over MDF, 3/4" MRMDF, 3/4" Plain Plywood, 3/4" Prefinished Plywood, Bending substrate, Paperback White Oak Veneer, 3/4" solid white oak slats  
TBD at time of construction on the bench, 3/4" White Oak solid wood where applicable.  
**Exterior 1** - Finish TBD  
**Edge Banding** - 1mm White Oak Wood Veneer where applicable.

HARDWARE

**Slides** - Salice Futura 5999 Or Equivalent  
**Hinges** - Blum 71B3550 Or Equivalent  
**Adj. Legs** - 100m Hafele Axilo  
**Floating Shelf Bracket** - Triade Concealed Mounting Bracket

NOTES

- 1) All Stone Countertop surfaces are for reference only, are NIC and not to be used for construction.
- 2) All visual depictions of grain direction are indicative of real life grain direction. No grains are to be matched.
- 3) Additional blocking not depicted on drawing may be provided based on construction requirements on the bench.

THE INFORMATION CONTAINED IN THIS DRAWING IS THE SOLE PROPERTY OF CREATIVE CONCEPTS OF NJ LLC. ANY REPRODUCTION IN PART OR AS A WHOLE WITHOUT THE WRITTEN PERMISSION OF CREATIVE CONCEPTS OF NJ IS PROHIBITED.

DRAWN BY	Tyler Jonin	DATE	12/29/2022
REVISION	V2.0	DATE	02/07/2023
REVISION		DATE	
REVISION		DATE	
REVISION		DATE	

DRAWING VERSION	SHEET NUMBER
1.0	2 OF 6

MANUFACTURER'S NOTE -  
Finished Component Dimensional Tolerance = +/- 0.0625" (1/16")  
Field modified parts are not subject to dimensional tolerance.

APPROVED FOR CONSTRUCTION BY:

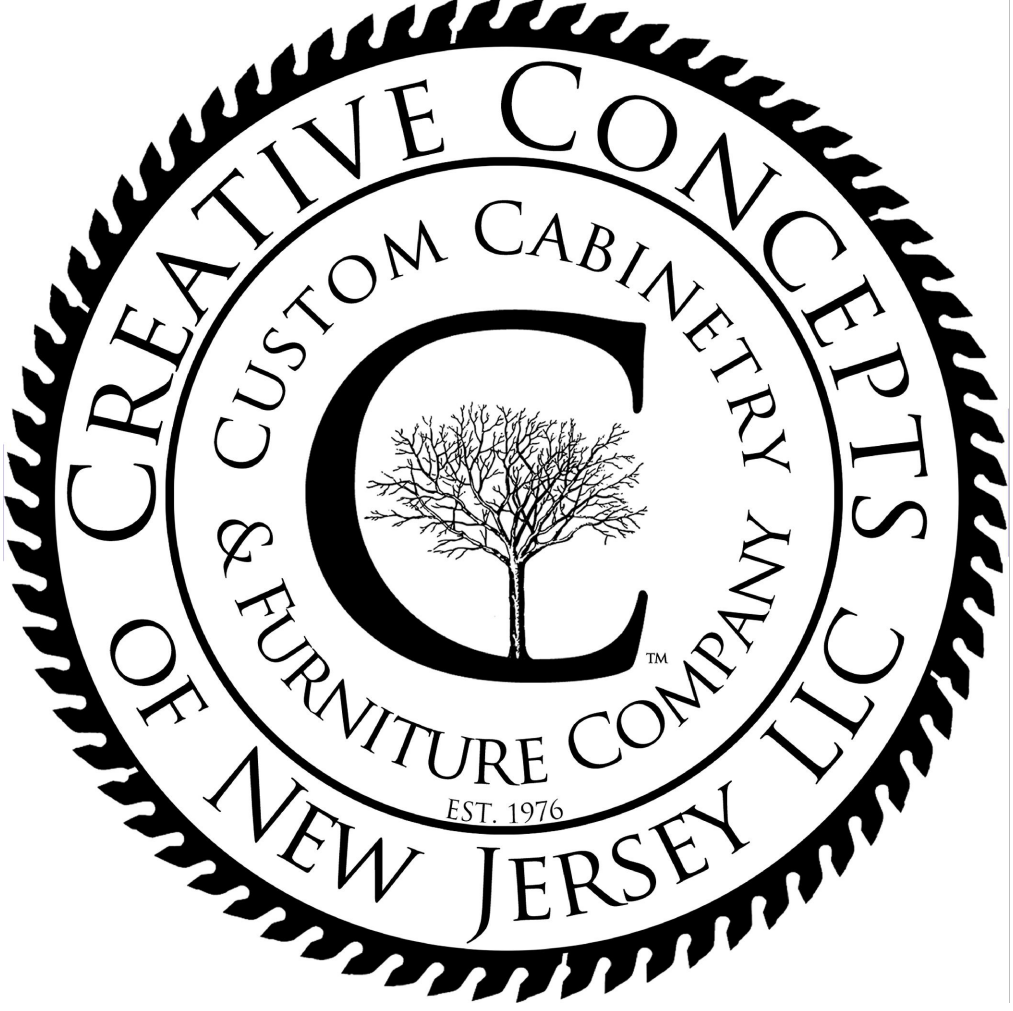
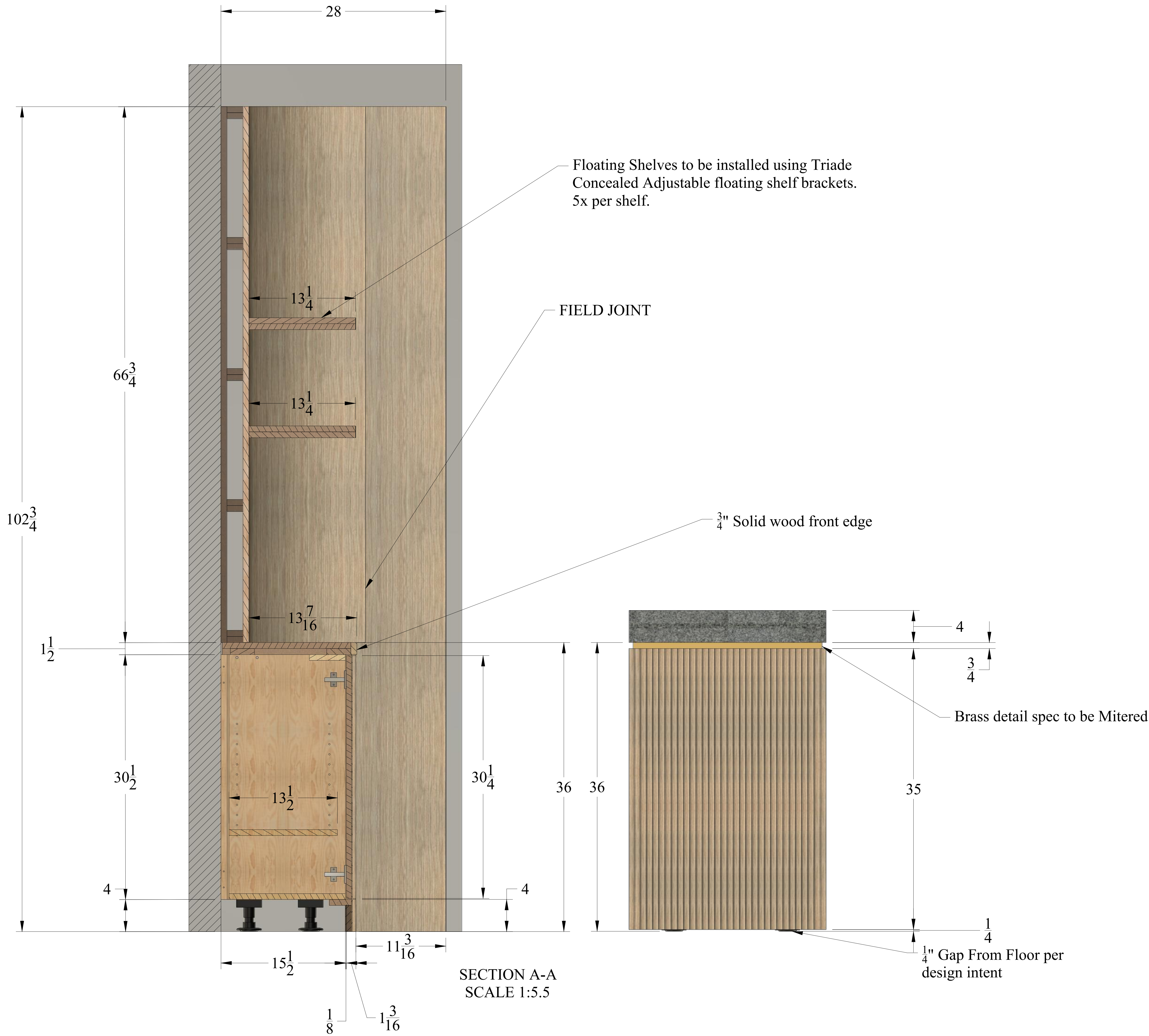
DATE:







Living Room Elevation Section Through A



CREATIVE CONCEPTS OF NJ  
580 NORTH COUNTYLINE ROAD  
BLDG 1, UNIT 3 08527  
JACKSON, NEW JERSEY 732-833-1776

MATERIALS

**Construction Materials** -  $\frac{3}{4}$ " White Oak Veneer over MDF,  $\frac{3}{4}$ " MRMDF,  $\frac{3}{4}$ " Plain Plywood,  $\frac{3}{4}$ " Prefinished Plywood, Bending substrate, Paperback White Oak Veneer,  $\frac{3}{4}$ " solid white oak slats  
TBD at time of construction on the bench,  $\frac{3}{4}$ " White Oak solid wood where applicable.  
**Exterior 1** - Finish TBD  
**Edge Banding** - 1mm White Oak Wood Veneer where applicable.

HARDWARE

**Slides** - Salice Futura 5999 Or Equivalent  
**Hinges** - Blum 71B3550 Or Equivalent  
**Adj. Legs** - 100m Hafele Axilo  
**Floating Shelf Bracket** - Triade Concealed Mounting Bracket

NOTES

- 1) All Stone Countertop surfaces are for reference only, are NIC and not to be used for construction.
- 2) All visual depictions of grain direction are indicative of real life grain direction. No grains are to be matched.
- 3) Additional blocking not depicted on drawing may be provided based on construction requirements on the bench.

THE INFORMATION CONTAINED IN THIS DRAWING IS THE SOLE PROPERTY OF CREATIVE CONCEPTS OF NJ LLC. ANY REPRODUCTION IN PART OR AS A WHOLE WITHOUT THE WRITTEN PERMISSION OF CREATIVE CONCEPTS OF NJ IS PROHIBITED.

DRAWN BY	Tyler Jonin	DATE	12/29/2022
REVISION	V2.0	DATE	02/07/2023
REVISION		DATE	
REVISION		DATE	
REVISION		DATE	

DRAWING VERSION	SHEET NUMBER
1.0	4 OF 6

MANUFACTURER'S NOTE -  
Finished Component Dimensional Tolerance = +/- 0.0625" (1/16")  
Field modified parts are not subject to dimensional tolerance.

APPROVED FOR CONSTRUCTION BY:

DATE:



Living Room Bar Plan Section Through B



CREATIVE CONCEPTS OF NJ  
580 NORTH COUNTYLINE ROAD  
BLDG 1, UNIT 3 08527  
JACKSON, NEW JERSEY 732-833-1776

MATERIALS

**Construction Materials** -  $\frac{3}{4}$ " White Oak Veneer over MDF,  $\frac{3}{4}$ " MRMDF,  $\frac{3}{4}$ " Plain Plywood,  $\frac{3}{4}$ " Prefinished Plywood, Bending substrate, Paperback White Oak Veneer,  $\frac{3}{4}$ " solid white oak slats  
TBD at time of construction on the bench,  $\frac{3}{4}$ " White Oak solid wood where applicable.  
**Exterior 1** - Finish TBD  
**Edge Banding** - 1mm White Oak Wood Veneer where applicable.

HARDWARE

**Slides** - Salice Futura 5999 Or Equivalent  
**Hinges** - Blum 71B3550 Or Equivalent  
**Adj. Legs** - 100m Hafele Axilo  
**Floating Shelf Bracket** - Triade Concealed Mounting Bracket

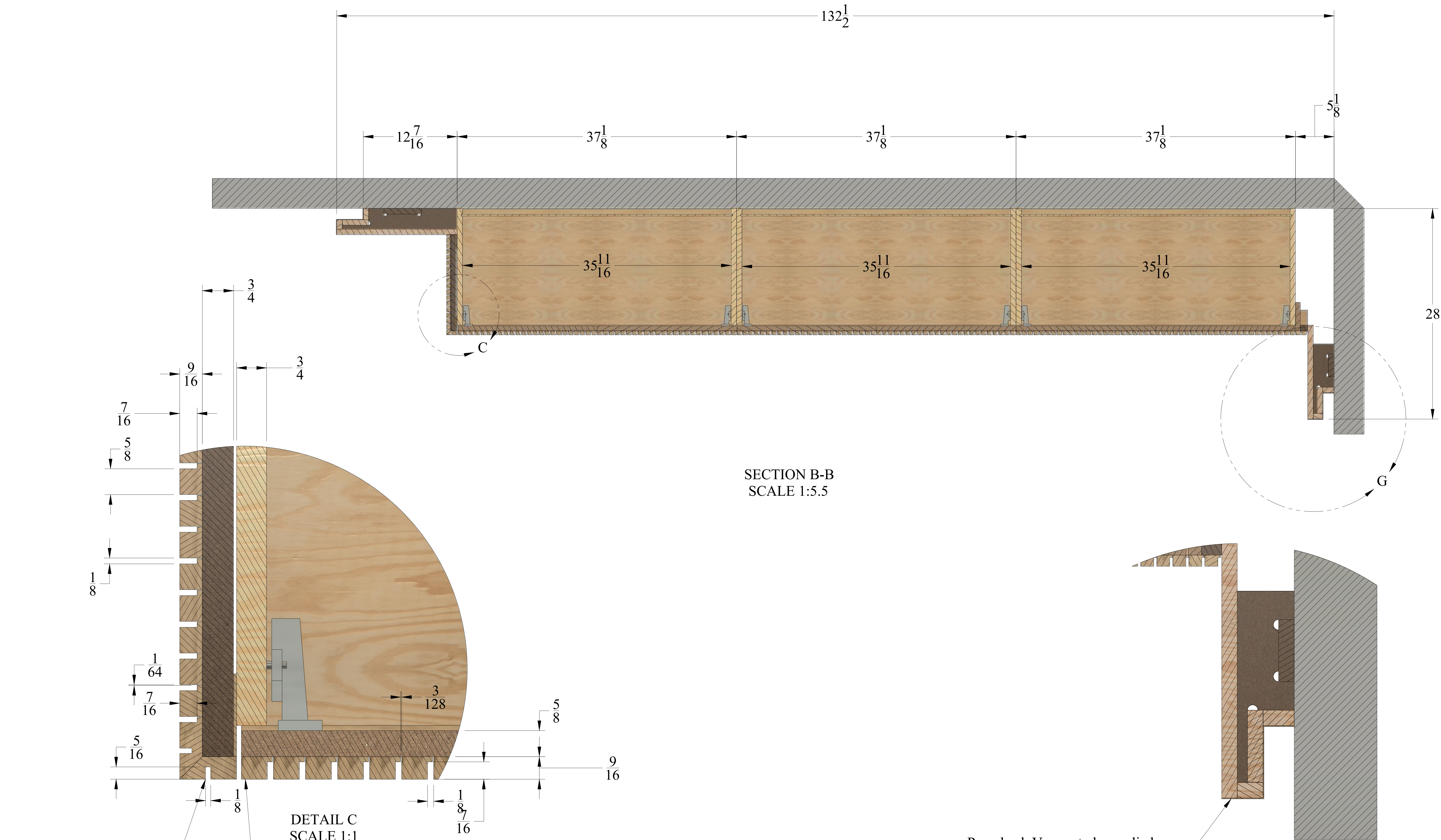
NOTES

- 1) All Stone Countertop surfaces are for reference only, are NIC and not to be used for construction.
- 2) All visual depictions of grain direction are indicative of real life grain direction. No grains are to be matched.
- 3) Additional blocking not depicted on drawing may be provided based on construction requirements on the bench.

THE INFORMATION CONTAINED IN THIS DRAWING IS THE SOLE PROPERTY OF CREATIVE CONCEPTS OF NJ LLC. ANY REPRODUCTION IN PART OR AS A WHOLE WITHOUT THE WRITTEN PERMISSION OF CREATIVE CONCEPTS OF NJ IS PROHIBITED.

DRAWN BY	Tyler Jonin	DATE	12/29/2022
REVISION	V2.0	DATE	02/07/2023
REVISION		DATE	
REVISION		DATE	
REVISION		DATE	

DRAWING VERSION	SHEET NUMBER
1.0	5 OF 6



SECTION B-B  
SCALE 1:5.5

DETAIL C  
SCALE 1:1

DETAIL G  
SCALE 1:2

**Manufactuer's Notes -**  
1) Slat spacing will vary from 0.25mm to 0.6mm dependant on needs to accomodate spacing requirements to create a seamless appearance. Actual dimensions may vary slightly at the bench.  
2) Slat spacing will vary from 0.25mm to 0.6mm dependant on needs to accomodate spacing requirements to create a seamless appearance. Actual dimensions may vary slightly at the bench.  
3) Finished Sizes modified slightly from design intent to accomodate the slat spacing needs.

Minimized Dado Depth to increase strength of corner component

Doors May require chamfer to allow function. Must be determined at the bench

Paperback Veneer to be applied over joints to create seamless appearance. The minimal thickness of paperback veneer negates the requirement of miter joints.

MANUFACTURER'S NOTE -  
Finished Component Dimensional Tolerance = +/- 0.0625" (1/16")  
Field modified parts are not subject to dimensional tolerance.

APPROVED FOR CONSTRUCTION BY:

DATE:



Bar Island Detail



CREATIVE CONCEPTS OF NJ  
580 NORTH COUNTYLINE ROAD  
BLDG 1, UNIT 3 08527  
JACKSON, NEW JERSEY 732-833-1776

MATERIALS

**Construction Materials** -  $\frac{3}{4}$ " White Oak Veneer over MDF,  $\frac{3}{4}$ " MRMDF,  $\frac{3}{4}$ " Plain Plywood,  $\frac{3}{4}$ " Prefinished Plywood, Bending substrate, Paperback White Oak Veneer,  $\frac{3}{4}$ " solid white oak slats  
TBD at time of construction on the bench,  $\frac{3}{4}$ " White Oak solid wood where applicable.  
**Exterior 1** - Finish TBD  
**Edge Banding** - 1mm White Oak Wood Veneer where applicable.

HARDWARE

**Slides** - Salice Futura 5999 Or Equivalent  
**Hinges** - Blum 71B3550 Or Equivalent  
**Adj. Legs** - 100m Hafele Axilo  
**Floating Shelf Bracket** - Triade Concealed Mounting Bracket

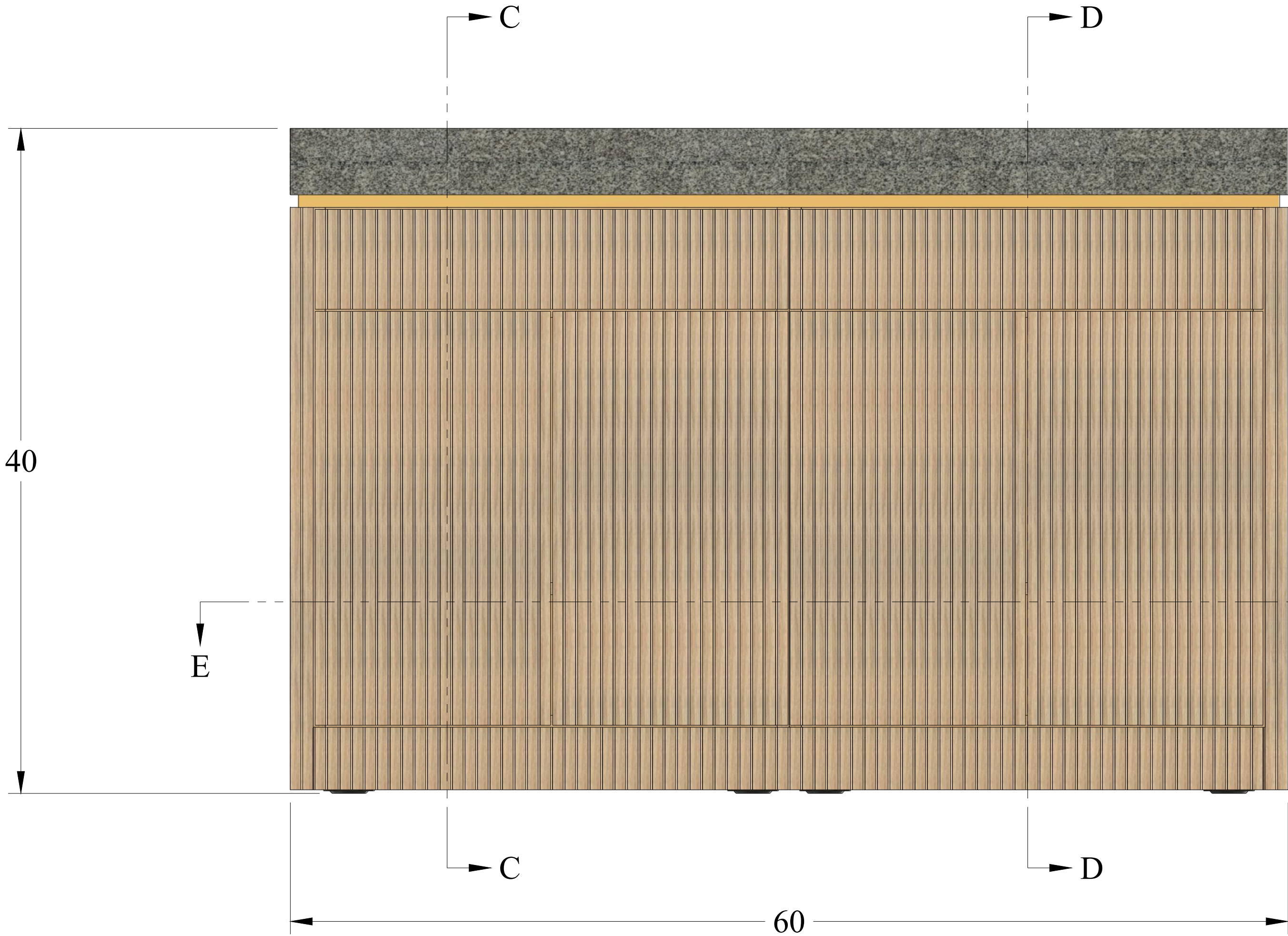
NOTES

- 1) All Stone Countertop surfaces are for reference only, are NIC and not to be used for construction.
- 2) All visual depictions of grain direction are indicative of real life grain direction. No grains are to be matched.
- 3) Additional blocking not depicted on drawing may be provided based on construction requirements on the bench.

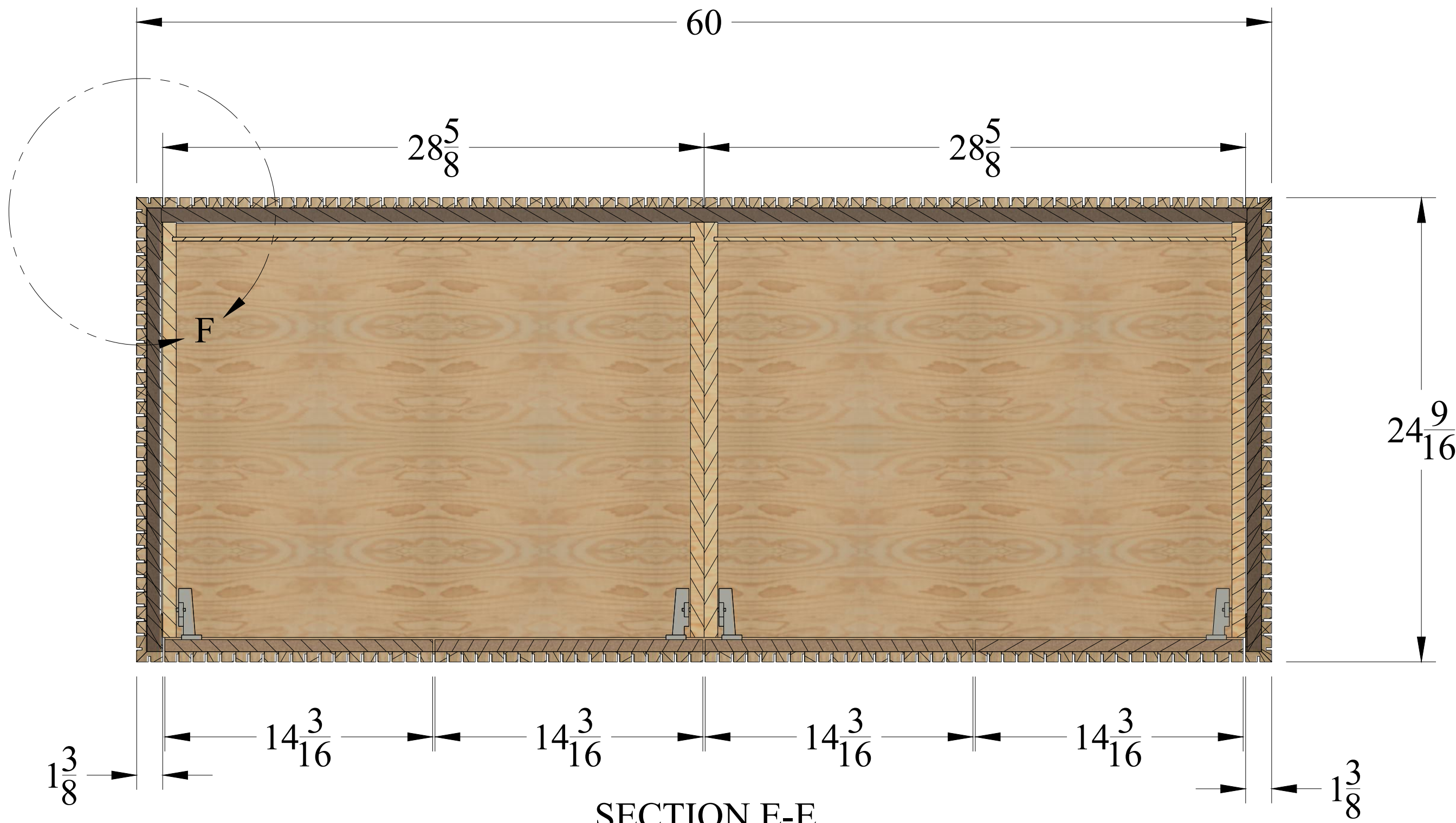
THE INFORMATION CONTAINED IN THIS DRAWING IS THE SOLE PROPERTY OF CREATIVE CONCEPTS OF NJ LLC. ANY REPRODUCTION IN PART OR AS A WHOLE WITHOUT THE WRITTEN PERMISSION OF CREATIVE CONCEPTS OF NJ IS PROHIBITED.

DRAWN BY	Tyler Jonin	DATE	12/29/2022
REVISION	V2.0	DATE	02/07/2023
REVISION		DATE	
REVISION		DATE	
REVISION		DATE	

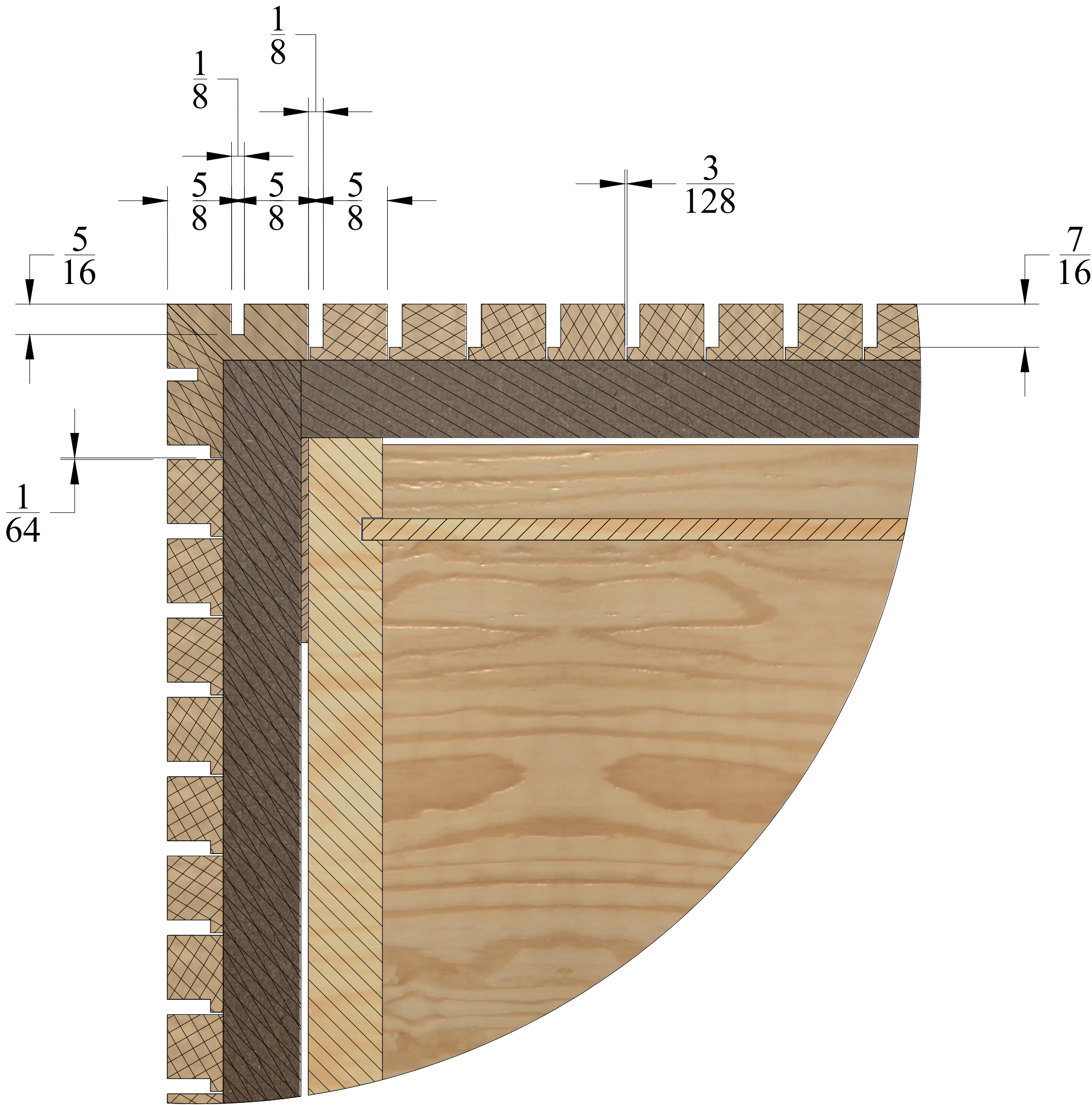
DRAWING VERSION	SHEET NUMBER
1.0	6 OF 6



SECTION C-C  
SCALE 1:5.5



SECTION E-E  
SCALE 1:5.5



DETAIL F  
SCALE 1:1

- Manufacturer's Notes -**
- 1) Slats to be milled in house from solid white oak
- 2) Slat spacing will vary from 0.25mm to 0.6mm dependant on needs to accomodate spacing requirements to create a seamless appearance. Actual dimensions may vary slightly at the bench.
- 3) Finished Sizes modified slightly from design intent to accomodate the slat spacing needs.

MANUFACTURER'S NOTE -  
Finished Component Dimensional Tolerance = +/- 0.0625" (1/16")  
Field modified parts are not subject to dimensional tolerance.

APPROVED FOR CONSTRUCTION BY:

DATE: